



## GFS Stuffed Cabbage Rolls Entree, with Sauce, Frozen, 5 Lb Tray, 4/Case



Item Number: 219851 

Made from quality, tender, steamed cabbage leaves, this entree offers a hand-rolled product, which highlights seasoned beef, rice, celery, onions, signature spices, and a rich tomato sauce.

- Fully cooked to reduce labor and preparation time
- Prepare from frozen or thawed state for multiple preparation options

Case (4/5 Pound Tray) 

Print

## Nutrition

Based On:  Rounding:

### Ingredients

Cabbage leaves, water, cooked beef, tomatoes (tomatoes, tomato juice, calcium chloride, citric acid), cooked rice, tomato paste, onion, egg, bread crumbs (wheat flour, sugar, yeast, soybean oil, salt, calcium propionate [to protect freshness]), tomato ketchup (tomato concentrate, high fructose corn syrup, distilled vinegar, corn syrup, salt, less than 2% of: onion powder, garlic powder, natural flavors), green bell pepper, salt, food starch-modified, textured vegetable protein (soy protein concentrate, caramel color), celery, nonfat dry milk, isolated soy protein, sugar, spices, dried beef stock, caramel color, canthaxanthin, dehydrated garlic. **COMMON ALLERGENS PRESENT:** Egg, Wheat, Soy, Milk. Nutrition and Ingredient statement updated July 2015. The ingredient and nutrition information provided here reflects the current information provided to GFS by its suppliers. Prior to consuming the product, individuals with severe food allergies should confirm the ingredient information on the actual label of the product.

### Nutrition Facts

Serving Size 1 each (226g)	
Amount Per Serving	
Calories 240	Calories From Fat 82.8
% Daily Value *	
<b>Fat 9g</b>	14%
Saturated Fat 4g	19%
Trans Fat 1g	
PolyUnsat. Fat 1g	n/a
MonoUnsat Fat 4g	n/a
<b>Cholesterol 40mg</b>	14%
<b>Sodium 800mg</b>	33%
<b>Potassium 360mg</b>	10%
<b>Carbohydrates 19g</b>	6%
Fiber 2g	9%
Sugar 6g	
<b>Protein 10g</b>	21%
Vitamin A 11% Vitamin B6 7% Vitamin B12 null%	
Vitamin C 15% Vitamin D IU null% Calcium 6% Iron 10%	
Phosphorous 10% Magnesium 3% Zinc 8% Thiamin 6%	
Riboflavin 4% Niacin B3 1%	
* Based on a 2000 calorie diet	
<b>Calories Per Gram:</b>	
Fat: 9 Carbohydrates: 4 Protein: 4	

**School Equivalents:**

Child Nutrition Label	No
Serving Size	n/a
Meat/Meat Alternative	n/a
Fruit/Vegetables	n/a
Grain/Breads	n/a

**Water Soluble Vitamins:**

Thiamin	0.09 mg
Riboflavin	0.068 mg
Niacin B3	0.136 mg
Pantothenic Acid	n/a
Folic Acid	n/a
Vitamin B6	0.136 mg
Vitamin B12	33.9 mcg
Vitamin C	10.12 mg

**Updated For New Final Rule:**

Meat/Meat Alternative	n/a
Grain/Breads	n/a
Fruit	n/a
Red/Orange	n/a
Dark Green	n/a
Starchy	n/a
Beans/Peas	n/a
Other	n/a
Notes:	n/a

**Fat Soluble Vitamins:**

Vitamin D IU	2.328 IU
Vitamin E mg	n/a
Vitamin K	n/a
Vitamin A IU	545.36 IU

**Minerals:**

Phosphorous	101.5 mg
Zinc	1.2 mg
Magnesium	13.989 mg
Copper	n/a
Selenium	n/a
Calcium	70.72 mg
Iron	2.1 mg
Manganese	n/a
Iodine	n/a

**Gordon Choice Stuffed Green  
Pepper Cups Entree, IQF, 24 Ct Bag,  
3/Case**



Item Number: 180280

Select green bell pepper cups feature a savory filling of seasoned beef and rice, offering a made-from-scratch entree.

- Fully cooked to reduce labor and preparation time
- Individually quick frozen ensures freshness and allows for easy product separation while frozen
- Reclosable bags for easy storage, handling, and portion control



Case (3/24 Count Bag)

\$0.94/Each \$67.69

Print

**More**

**Manufacturer**

**Quantity Invoiced, Last 7-Weeks:**

Pack	3/Case	Week of	Bag	Case
Portion Size	Each	03/25/2018	0	0
Portion/Case	72	04/01/2018	0	10
Kosher	No	04/08/2018	0	0
Gluten-free	No	04/15/2018	0	0
Net Weight	20.25lbs	04/22/2018	0	0
Vendor Item Code	67347	04/29/2018	0	0
Country of Origin	United States	05/06/2018	0	10

**Item Yield**

1 Case = 72 (3 x 24 per Bag) Entree, Stuffed Green Pepper Cups, IQF

**Thawing Instructions**

THAW UNDER REFRIGERATION FOR A MINIMUM OF 24 HOURS PRIOR TO COOKING.

**Shelf Life**

FROZEN= 365 DAYS @ 0°F. COOLER= 3 DAYS @ 28-34°F.

**Basic Preparation**

PLACE PEPPER CUPS IN A 2-1/2" STEAM TABLE PAN. POUR 1/4" WATER IN BOTTOM OR COVER WITH SAUCE. COOK ON 350\* FOR 40 MINUTES OR UNTIL INTERNAL TEMP REACHES 160\*F.

**Marketing Tips**

1. LABOR SAVINGS, 2. PRODUCTS MADE FROM SCRATCH, 3. CONSISTENCY, 4. HIGH QUALITY INGREDIENTS, 5. GFS BRAND\*\*SELECT GREEN BELL PEPPER CUPS BRIMMING WITH SPECIALLY-SEASONED BEEF AND RICE STUFFING IN A RESEALABLE POUCH. CREATE AND TOP WITH YOUR OWN UNIQUE SAUCES. 72-4.5Z IQF PEPPER CUPS PER CASE. PACKED IN THREE SEALABLE BAGS.\*\*HEALTHCARE, RESTAURANTS, CAMPS, COLLEGES AND UNIVERSITIES, GRADE SCHOOLS, CASINOS, JAILS, B&I, CATERERS, FOODSERVICE MANAGEMENT CO. ANYONE\*\*SERVE AS IS, OR ADD INGREDIENTS TO MAKE YOUR VERY OWN SIGNATURE DISH. AN EASY WAY TO INTRODUCE AS A SPECIAL OR TO USE IN AN EMERGENCY.

**Nutrition**

Based On: AP Entree, Grn Peppers, Stfd, GFS Rounding: On

**Ingredients**

GREEN BELL PEPPERS, COOKED BEEF, COOKED RICE, ONION, WATER, EGG, BREAD CRUMBS (WHEAT FLOUR, SUGAR, YEAST, SOYBEAN OIL, SALT, CALCIUM PROPIONATE [TO PROTECT FRESHNESS]), TEXTURED VEGETABLE PROTEIN (SOY PROTEIN CONCENTRATE, CARAMEL COLOR), CELERY, NONFAT DRY MILK, SALT, ISOLATED SOY PROTEIN, DRIED BEEF STOCK, SPICE, CARAMEL COLOR. COMMON ALLERGENS PRESENT: Wheat, Egg, Milk, Soy. Prior to consuming the product, individuals with severe food allergies should confirm the ingredient information on the actual label of the product. Nutrition and Ingredient statement updated March 2018. This ingredient and nutrition information was provided by the third-party product manufacturer and/or supplier and was not in any way created or verified by GFS. The information is being passed on as a courtesy and for informational purposes only. GFS in no way guarantees the accuracy or completeness of this information and NO WARRANTIES ARE MADE OR IMPLIED; ALL IMPLIED WARRANTIES OF MERCHANTABILITY AND FITNESS FOR A PARTICULAR PURPOSE ARE EXPRESSLY EXCLUDED. Click here for K12 spec sheet: [https://apps.gfs.com/experience/resources/great-for-schools/files/child-nutrition-labels/pdfs/180280\\_SLE.pdf](https://apps.gfs.com/experience/resources/great-for-schools/files/child-nutrition-labels/pdfs/180280_SLE.pdf)

**Nutrition Facts**

Serving Size 1 each (127g)	
Amount Per Serving	
<b>Calories</b> 180	Calories From Fat 99
	% Daily Value *
<b>Fat</b> 11g	17%
Saturated Fat 5g	25%
Trans Fat 0.5g	
PolyUnsat. Fat	n/a
MonoUnsat. Fat	n/a
<b>Cholesterol</b> 35mg	12%
<b>Sodium</b> 360mg	15%
<b>Potassium</b>	n/a
<b>Carbohydrates</b> 12g	4%
Fiber 1g	4%
Sugar 2g	
<b>Protein</b> 8g	16%
Vitamin A IU 2%    Vitamin C 45%    Calcium 4%    Iron 8%	
* Based on a 2000 calorie diet	
<b>Calories Per Gram:</b>	
Fat: 9    Carbohydrates: 4    Protein: 4	

**School Equivalents:**

Child Nutrition Label	No
Serving Size	1 Each
Meat/Meat Alternative	n/a
Fruit/Vegetables	n/a
Grain/Breads	n/a

**Water Soluble Vitamins:**

Thiamin	n/a
Riboflavin	n/a
Niacin B3	n/a
Pantothenic Acid	n/a
Folic Acid	n/a
Vitamin B6	n/a
Vitamin B12	n/a
Vitamin C	27 mg

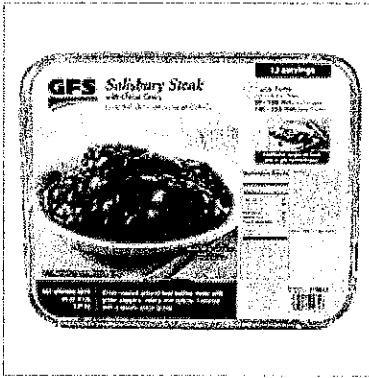
**Updated For New Final Rule:**

Meat/Meat Alternative	1.5 oz
Grain/Breads	0 oz eq
Fruit	0 cup
Red/Orange	0 cup
Dark Green	0 cup
Starchy	0 cup
Beans/Peas	0 cup
Other	0.25 cup
Notes:	n/a

**Fat Soluble Vitamins:**

Vitamin D IU	n/a
Vitamin E mg	n/a
Vitamin K	n/a
Vitamin A IU	100 IU

**GFS Salisbury Steak Entree, with Gravy, Frozen, 80 Oz Tray, 4/Case**



Item Number: 219843 \*

This entree features oven-roasted coarse ground beef patties and breadcrumbs with celery, green bell peppers, and spices topped with savory onion gravy.

- Fully cooked to reduce labor and preparation time
- Prepare from frozen or thawed state for multiple preparation options

Case (4/80 Ounce Tray)



Print

**Nutrition**

Based On:  Rounding:

**Ingredients**

WATER, COOKED BEEF, ONION, BREAD CRUMBS (WHEAT FLOUR, SUGAR, YEAST, SOYBEAN OIL, SALT, CALCIUM PROPIONATE [TO PROTECT FRESHNESS]), FOOD STARCH-MODIFIED, GREEN BELL PEPPER, SOYBEAN OIL, WORCESTERSHIRE SAUCE (DISTILLED VINEGAR, MOLASSES, CORN SYRUP, WATER, SALT, CARAMEL COLOR, SUGAR, SPICES, ANCHOVIES, NATURAL FLAVOR [CONTAINS SOY], TAMARIND), SALT, NONFAT DRY MILK, BEEF FLAVOR (NATURAL BEEF FLAVORINGS, SALT, LACTOSE, SUGAR), CARAMEL COLOR, ONION POWDER, MONO- & DIGLYCERIDES WITH CITRIC ACID, SPICES, GARLIC POWDER. COMMON ALLERGENS PRESENT: WHEAT, SOY, MILK, ANCHOVIES. Nutrition and Ingredient statement updated on August 2015. The ingredient and nutrition information provided here reflect the current information provided to GFS by its suppliers. Prior to consuming the product, individuals with severe allergies should confirm the ingredient information on the actual label of the product

**Nutrition Facts**

Serving Size 1 each (189g)	
Amount Per Serving	
<b>Calories 280</b>	Calories From Fat 144
	% Daily Value *
<b>Fat 16g</b>	25%
Saturated Fat 6g	30%
Trans Fat 1g	
PolyUnsat. Fat	n/a
MonoUnsat Fat	n/a
<b>Cholesterol 55mg</b>	18%
<b>Sodium 470mg</b>	20%
<b>Potassium</b>	n/a
<b>Carbohydrates 10g</b>	3%
Fiber 1g	4%
Sugar 2g	
<b>Protein 13g</b>	26%
Vitamin A IU 0%    Vitamin C 4%    Calcium 4%    Iron 8%	
* Based on a 2000 calorie diet	
<b>Calories Per Gram:</b>	
Fat: 9    Carbohydrates: 4    Protein: 4	

**School Equivalents:**

Child Nutrition Label	No
Serving Size	n/a
Meat/Meat Alternative	n/a
Fruit/Vegetables	n/a
Grain/Breads	n/a

**Water Soluble Vitamins:**

Thiamin	n/a
Riboflavin	n/a
Niacin B3	n/a
Pantothenic Acid	n/a
Folic Acid	n/a
Vitamin B6	n/a
Vitamin B12	n/a
Vitamin C	2.4 mg

**Updated For New Final Rule:**

Meat/Meat Alternative	n/a
Grain/Breads	n/a
Fruit	n/a
Red/Orange	n/a
Dark Green	n/a
Starchy	n/a
Beans/Peas	n/a
Other	n/a
Notes:	n/a

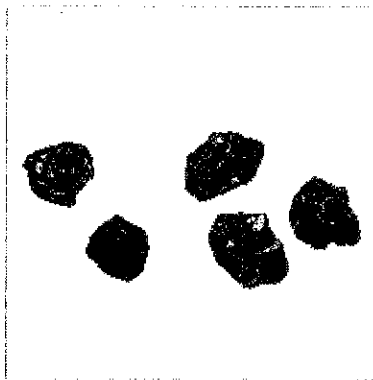
**Fat Soluble Vitamins:**


Vitamin D IU	n/a
Vitamin E mg	n/a
Vitamin K	n/a
Vitamin A IU	0 IU

**Minerals:**

Phosphorous	n/a
Zinc	n/a
Magnesium	n/a
Copper	n/a
Selenium	n/a
Calcium	40 mg
Iron	1.44 mg
Manganese	n/a
Iodine	n/a

**Halperns' Beef Diced, 95% Lean, 1 x 1 x 1 Inch, IQF Bulk-Packed, 5 Lb Bag, 2/Case**



Item Number: 669091 

These diced portions are cut from lean, solid muscle beef, and are hand trimmed to a visual lean point of 95 percent.

- Individually quick frozen to ensure freshness and allow for easy separation while frozen
- Bulk packaging makes it easier to serve large groups with less waste

Case (2/5 Pound Bag)

Print

**Nutrition**

Based On:  Rounding:

**Ingredients**

Beef. COMMON ALLERGENS PRESENT: None. Nutrition and ingredient statement updated July 2015. The ingredients and nutrition information provided here reflects the current information provided to GFS by its suppliers. Prior to consuming the product, individuals with severe food allergies should confirm the ingredient information on the actual label of the product.

**Nutrition Facts**

Serving Size 4 oz (113g)	
Amount Per Serving	
<b>Calories 340</b>	<b>Calories From Fat 216</b>
	% Daily Value *
<b>Fat 24g</b>	<b>37%</b>
Saturated Fat 9g	45%
Trans Fat 0g	
PolyUnsat. Fat	n/a
MonoUnsat Fat	n/a
<b>Cholesterol 100mg</b>	<b>33%</b>
<b>Sodium 70mg</b>	<b>3%</b>
<b>Potassium</b>	<b>n/a</b>
<b>Carbohydrates 0g</b>	<b>n/a</b>
Fiber 0g	n/a
Sugar 0g	
<b>Protein 30g</b>	<b>60%</b>
Vitamin A 1U 0%    Vitamin C 0%    Calcium 2%    Iron 15%	
* Based on a 2000 calorie diet	
<b>Calories Per Gram:</b>	
Fat 9    Carbohydrates: 4    Protein: 4	

**School Equivalents:**

Child Nutrition Label	No
Serving Size	n/a
Meat/Meat Alternative	n/a
Fruit/Vegetables	n/a
Grain/Breads	n/a

**Water Soluble Vitamins:**

Thiamin	n/a
Riboflavin	n/a
Niacin B3	n/a
Pantothenic Acid	n/a
Folic Acid	n/a
Vitamin B6	n/a
Vitamin B12	n/a
Vitamin C	0 mg

**Updated For New Final Rule:**

Meat/Meat Alternative	n/a
Grain/Breads	n/a
Fruit	n/a
Red/Orange	n/a
Dark Green	n/a
Starchy	n/a
Beans/Peas	n/a
Other	n/a
Notes:	n/a

**Fat Soluble Vitamins:**

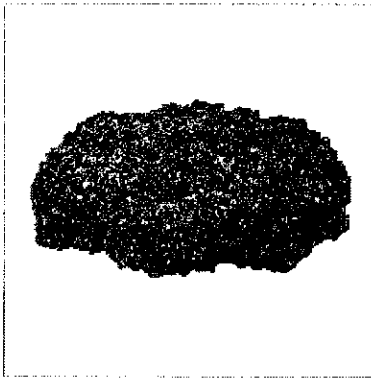
Vitamin D IU	n/a
Vitamin E mg	n/a
Vitamin K	n/a
Vitamin A IU	0 IU

**Minerals:**

Phosphorous	n/a
Zinc	n/a
Magnesium	n/a
Copper	n/a
Selenium	n/a
Calcium	20 mg
Iron	2.7 mg
Manganese	n/a
Iodine	n/a



**GFS Flame-Broiled USDA Choice Ground Chuck Beef Pub Burger Patties, 3 Ounce, Cooked, IQF, 3 Oz Each, 64/Case**



Item Number: 100690

These quality, beef burgers are thick, seasoned, fully cooked, and charmarked for a homemade, freshly grilled appearance and taste. They may be stored in the refrigerator for up to seven days. They may be prepared on the grill or in the oven.

- **USDA Choice** is a high USDA grade, with ample marbling, and is quite tender, juicy, and flavorful
- **Fully cooked** to reduce labor and preparation time
- **Heat from frozen** for quick preparation
- **Individually quick frozen** ensures freshness and allows for easy product separation while frozen

Case (64/3 Ounce Each)

Print

**Nutrition**

Based On:  Rounding:

**Ingredients**

Beef, Seasoning (Salt, Dextrose, Natural Flavors, Spice), Natural Flavoring. **COMMON ALLERGENS PRESENT: N/A.** Nutrition & Ingredient statement updated April 2015. The ingredient and nutrition information provided here reflects the current information provided to GFS by its suppliers. Prior to consuming the product, individuals with severe food allergies should confirm the ingredient information on the actual label of the product.

**Nutrition Facts**

Serving Size 1 each (84g)	
Amount Per Serving	
<b>Calories 220</b>	Calories From Fat 153
	% Daily Value *
<b>Fat 17g</b>	26%
Saturated Fat 7g	35%
Trans Fat 0g	
PolyUnsat. Fat	n/a
MonoUnsat Fat	n/a
<b>Cholesterol 70mg</b>	23%
<b>Sodium 290mg</b>	12%
<b>Potassium</b>	n/a
<b>Carbohydrates 0g</b>	n/a
Fiber 0g	n/a
Sugar 0g	
<b>Protein 19g</b>	38%
Vitamin A 0% Vitamin C 0% Calcium 0% Iron 8%	
* Based on a 2000 calorie diet	
<b>Calories Per Gram:</b>	
Fat: 9 Carbohydrates: 4 Protein: 4	

**School Equivalents:**

Child Nutrition Label	No
Serving Size	1 Each
Meat/Meat Alternative	n/a
Fruit/Vegetables	n/a
Grain/Breads	n/a

**Water Soluble Vitamins:**

Thiamin	n/a
Riboflavin	n/a
Niacin B3	n/a
Pantothenic Acid	n/a
Folic Acid	n/a
Vitamin B6	n/a
Vitamin B12	n/a
Vitamin C	0 mg

**Updated For New Final Rule:**

Meat/Meat Alternative	2.75 oz
Grain/Breads	0 oz eq
Fruit	0 cup
Red/Orange	0 cup
Dark Green	0 cup
Starchy	0 cup
Beans/Peas	0 cup
Other	<del>0.25 cup</del>
Notes:	n/a

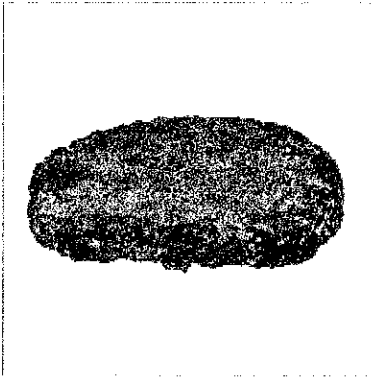
**Fat Soluble Vitamins:**



Vitamin D IU	n/a
Vitamin E mg	n/a
Vitamin K	n/a
Vitamin A IU	0 IU

**Minerals:**

Phosphorous	n/a
Zinc	n/a
Magnesium	n/a
Copper	n/a
Selenium	n/a
Calcium	0 mg
Iron	1.44 mg
Manganese	n/a
Iodine	n/a


**GFS Flame-Broiled Ground Beef Patties, 3 Ounce, Cooked, Frozen Layer-Packed, 3 Oz Each, 64/Case**



Item Number: 612840  

These quality beef burgers are seasoned, fully cooked, and charmarked for a homemade, freshly grilled appearance and taste. They may be stored in the refrigerator for up to seven days. They may be prepared on the grill or in the oven.

- Fully cooked to reduce labor and preparation time
- Heat from frozen for quick preparation
- Individually quick frozen ensures freshness and allows for easy product separation while frozen
- Layer-packed saves time and labor when serving large groups

Case (64/3 Ounce Each) 

Print

**Nutrition**

Based On:  Rounding:

**Ingredients**

Beef, Seasoning (Salt, Dextrose, Natural Flavor, Spice), Natural Flavoring. COMMON ALLERGENS PRESENT: None. Prior to consuming the product, individuals with severe food allergies should confirm the ingredient information on the actual label of the product. Nutrition and ingredient statement updated December 2016. This ingredient and nutrition information was provided by the third-party product manufacturer and/or supplier and was not in any way created or verified by GFS. The information is being passed on as a courtesy and for informational purposes only. GFS in no way guarantees the accuracy or completeness of this information and NO WARRANTIES ARE MADE OR IMPLIED; ALL IMPLIED WARRANTIES OF MERCHANTABILITY AND FITNESS FOR A PARTICULAR PURPOSE ARE EXPRESSLY EXCLUDED.

**Nutrition Facts**

Serving Size 1 each (84g)	
Amount Per Serving	
<b>Calories 220</b>	<b>Calories From Fat 153</b>
	% Daily Value *
<b>Fat 17g</b>	26%
Saturated Fat 7g	35%
Trans Fat 0g	
PolyUnsat. Fat	n/a
MonoUnsat Fat	n/a
<b>Cholesterol 70mg</b>	23%
<b>Sodium 290mg</b>	12%
<b>Potassium</b>	n/a
<b>Carbohydrates 0g</b>	n/a
Fiber 0g	n/a
Sugar 0g	
<b>Protein 19g</b>	38%
Vitamin A IU 0%    Vitamin C 0%    Calcium 0%    Iron 8%	
* Based on a 2000 calorie diet	
<b>Calories Per Gram:</b>	
Fat: 9    Carbohydrates: 4    Protein: 4	

**School Equivalents:**

Child Nutrition Label	No
Serving Size	1 Each
Meat/Meat Alternative	n/a
Fruit/Vegetables	n/a
Grain/Breads	n/a

**Water Soluble Vitamins:**

Thiamin	n/a
Riboflavin	n/a
Niacin B3	n/a
Pantothenic Acid	n/a
Folic Acid	n/a
Vitamin B6	n/a
Vitamin B12	n/a
Vitamin C	0 mg

**Updated For New Final Rule:**

Meat/Meat Alternative	2.75 oz
Grain/Breads	0 oz eq
Fruit	0 cup
Red/Orange	0 cup
Dark Green	0 cup
Starchy	0 cup
Beans/Peas	<del>0 cup</del>
Other	0 cup
Notes:	n/a

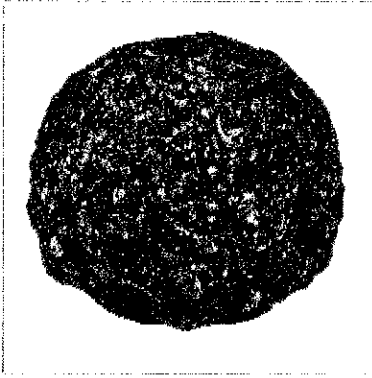
**Fat Soluble Vitamins:**

Vitamin D IU	n/a
Vitamin E mg	n/a
Vitamin K	n/a
Vitamin A IU	0 IU

**Minerals:**

Phosphorous	n/a
Zinc	n/a
Magnesium	n/a
Copper	n/a
Selenium	n/a
Caicium	0 mg
Iron	1.44 mg
Manganese	n/a
Iodine	n/a

**GFS Ground Pure Beef, 80% Lean, Frozen Bulk-Packed Tubes, 10 Lb Bag, 3/Case**



Item Number: 510599

This quality, pure ground beef is packed in 10 pound chubs, ideal for a variety of applications including chili, meatloaf, lasagna, sauces, and more.

- Bulk packaging saves time and reduces waste when serving large groups
- Prepare from frozen or thaw for versatility

Case (3/10 Pound Bag)

Print

**Nutrition**

Based On:  Rounding:

**Ingredients**

Beef. **COMMON ALLERGENS PRESENT:** None. Prior to consuming the product, individuals with severe food allergies should confirm the ingredient information on the actual label of the product. Nutrition and Ingredient statement updated December 2016. This ingredient and nutrition information was provided by the third-party product manufacturer and/or supplier and was not in any way created or verified by GFS. The information is being passed on as a courtesy and for informational purposes only. GFS in no way guarantees the accuracy or completeness of this information and **NO WARRANTIES ARE MADE OR IMPLIED; ALL IMPLIED WARRANTIES OF MERCHANTABILITY AND FITNESS FOR A PARTICULAR PURPOSE ARE EXPRESSLY EXCLUDED.**

**Nutrition Facts**

Serving Size 4 oz (112g)	
Amount Per Serving	
<b>Calories 290</b>	<b>Calories From Fat 198</b>
	% Daily Value *
<b>Fat 22g</b>	34%
Saturated Fat 9g	45%
Trans Fat 1.5g	
PolyUnsat. Fat	n/a
MonoUnsat Fat	n/a
<b>Cholesterol 75mg</b>	25%
<b>Sodium 65mg</b>	3%
<b>Potassium</b>	n/a
<b>Carbohydrates 0g</b>	n/a
Fiber 0g	n/a
Sugar 0g	
<b>Protein 21g</b>	42%
Vitamin A 0% Vitamin C 0% Calcium 0% Iron 10%	
* Based on a 2000 calorie diet	
<b>Calories Per Gram:</b>	
Fat: 9 Carbohydrates: 4 Protein: 4	

**School Equivalents:**

Child Nutrition Label	No
Serving Size	n/a
Meat/Meat Alternative	n/a
Fruit/Vegetables	n/a
Grain/Breads	n/a

**Water Soluble Vitamins:**

Thiamin	n/a
Riboflavin	n/a
Niacin B3	n/a
Pantothenic Acid	n/a
Folic Acid	n/a
Vitamin B6	n/a
Vitamin B12	n/a
Vitamin C	0 mg

**Updated For New Final Rule:**

Meat/Meat Alternative	n/a
Grain/Breads	n/a
Fruit	n/a
Red/Orange	n/a
Dark Green	n/a
Starchy	n/a
Beans/Peas	n/a
Other	n/a
Notes:	n/a


**Fat Soluble Vitamins:**


Vitamin D IU	n/a
Vitamin E mg	n/a
Vitamin K	n/a
Vitamin A IU	0 IU

**Minerals:**

Phosphorous	n/a
Zinc	n/a
Magnesium	n/a
Copper	n/a
Selenium	n/a
Calcium	0 mg
Iron	1.8 mg
Manganese	n/a
Iodine	n/a

**GFS Shredded Chicken, White Meat, Cooked, IQF, 5 Lb Bag, 2/Case**

Item Number: 617760 

Case (2/5 Pound Bag) 

Print

**Nutrition**

Based On:  Rounding:

**Ingredients**

Boneless, skinless chicken white meat. COMMON ALLERGENS PRESENT: None. Nutrition and Ingredient statement updated September 2015. The ingredient and nutrition information provided here reflects the current information provided to GFS by its suppliers. Prior to consuming the product, individuals with severe food allergies should confirm the ingredient information on the actual label of the product.

**Nutrition Facts**

Serving Size 3 oz (85g)	
Amount Per Serving	
<b>Calories</b> 120	Calories From Fat 13.5
	% Daily Value *
<b>Fat</b> 1.5g	2%
Saturated Fat 0g	n/a
Trans Fat 0g	
PolyUnsat. Fat	n/a
MonoUnsat Fat	n/a
<b>Cholesterol</b> 55mg	18%
<b>Sodium</b> 35mg	1%
<b>Potassium</b>	n/a
<b>Carbohydrates</b> 0g	n/a
Fiber 0g	n/a
Sugar 0g	
<b>Protein</b> 26g	52%
Vitamin A 0% Vitamin C 0% Calcium 0% Iron 2%	
* Based on a 2000 calorie diet	
<b>Calories Per Gram:</b>	
Fat: 9 Carbohydrates: 4 Protein: 4	

**School Equivalents:**

Child Nutrition Label	No
Serving Size	n/a
Meat/Meat Alternative	n/a
Fruit/Vegetables	n/a
Grain/Breads	n/a

**Water Soluble Vitamins:**

Thiamin	n/a
Riboflavin	n/a
Niacin B3	n/a
Pantothenic Acid	n/a
Folic Acid	n/a
Vitamin B6	n/a
Vitamin B12	n/a
Vitamin C	0 mg

**Updated For New Final Rule:**

Meat/Meat Alternative	n/a
Grain/Breads	n/a
Fruit	n/a
Red/Orange	n/a
Dark Green	n/a
Starchy	n/a
Beans/Peas	n/a
Other	n/a
Notes:	n/a

**Fat Soluble Vitamins:**

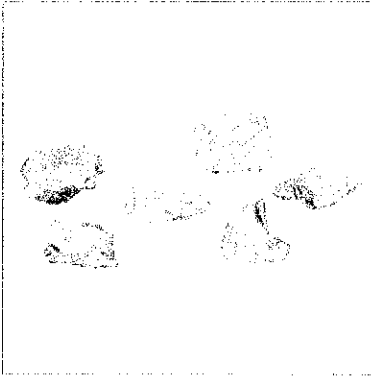
Vitamin D IU	n/a
Vitamin E mg	n/a
Vitamin K	n/a
Vitamin A IU	0 IU

**Minerals:**

Phosphorous	n/a
Zinc	n/a
Magnesium	n/a
Copper	n/a
Selenium	n/a
Calcium	0 mg
Iron	0.36 mg
Manganese	n/a
Iodine	n/a



**GFS Diced Chicken, 60% White 40% Dark, 1 Inch, Cooked, Frozen, 5 Lb Bag, 2/Case**



Item Number: 290599 (gf)

Dark and white meat chicken has been diced into one inch pieces, enabling use in a variety of applications. It can be used to create savory pot pies, chicken and dumplings, tacos, and more.

- Contains no artificial ingredients, ensuring a 100 percent meat product

Case (2/5 Pound Bag)



Print

**Nutrition**

Based On:  Rounding:

**Ingredients**

Natural Proportion Chicken Meat (50-65% White, 50-35% Dark). COMMON ALLERGENS PRESENT: None. Prior to consuming the product, individuals with severe food allergies should confirm the ingredient information on the actual label of the product. Nutrition and Ingredient statement updated December 2015. This ingredient and nutrition information was provided by the third-party product manufacturer and/or supplier and was not in any way created or verified by GFS. The information is being passed on as a courtesy and for informational purposes only. GFS in no way guarantees the accuracy or completeness of this information and NO WARRANTIES ARE MADE OR IMPLIED; ALL IMPLIED WARRANTIES OF MERCHANTABILITY AND FITNESS FOR A PARTICULAR PURPOSE ARE EXPRESSLY EXCLUDED.

**Nutrition Facts**

Serving Size 3 oz (85g)	
Amount Per Serving	
<b>Calories</b> 130	Calories From Fat 22.5
% Daily Value *	
<b>Fat</b> 2.5g	4%
Saturated Fat 1g	5%
Trans Fat 0g	
PolyUnsat. Fat	n/a
MonoUnsat Fat	n/a
<b>Cholesterol</b> 70mg	23%
<b>Sodium</b> 45mg	2%
<b>Potassium</b>	n/a
<b>Carbohydrates</b> 0g	n/a
Fiber 0g	n/a
Sugar 0g	
<b>Protein</b> 26g	52%
Vitamin A 1U 0%    Vitamin C 0%    Calcium 0%    Iron 6%	
* Based on a 2000 calorie diet	
<b>Calories Per Gram:</b>	
Fat: 9    Carbohydrates: 4    Protein: 4	

**School Equivalents:**

Child Nutrition Label	No
Serving Size	n/a
Meat/Meat Alternative	n/a
Fruit/Vegetables	n/a
Grain/Breads	n/a

**Water Soluble Vitamins:**

Thiamin	n/a
Riboflavin	n/a
Niacin B3	n/a
Pantothenic Acid	n/a
Folic Acid	n/a
Vitamin B6	n/a
Vitamin B12	n/a
Vitamin C	0 mg

**Updated For New Final Rule:**

Meat/Meat Alternative	n/a
Grain/Breads	n/a
Fruit	n/a
Red/Orange	n/a
Dark Green	n/a
Starchy	n/a
Beans/Peas	n/a
Other	n/a
Notes:	n/a


**Fat Soluble Vitamins:**

Vitamin D IU	n/a
Vitamin E mg	n/a
Vitamin K	n/a
Vitamin A IU	0 IU

**Minerals:**

Phosphorous	n/a
Zinc	n/a
Magnesium	n/a
Copper	n/a
Selenium	n/a
Calcium	0 mg
Iron	1.08 mg
Manganese	n/a
Iodine	n/a

**Pierce Chicken Fried Breaded Chicken Thighs, Cooked, Frozen, 15 Lb Bag, 1/Case**

Item Number: 102792 

These 4.9 ounce average chicken thighs are marinated, coated with a traditional breading, and fried until fully prepared. Designed to be baked, this product provides crispy fried chicken flavor right out of the oven.

- Fully prepared, simply heat and serve
- Precooked eliminates liability of serving undercooked chicken



Case (1/15 Pound Bag)

\$1.01/CtAvg \$50.35

Print

**More**

**Manufacturer**

Pack	1/Case
Portion Size	CtAvg
Portion/Case	50
Kosher	No
Gluten-free	No
Net Weight	15lbs
Vendor Item Code	65549
Country of Origin	United States

**Quantity Invoiced, Last 7-Weeks:**

Week of	Bag	Case
03/25/2018	0	14
04/01/2018	0	0
04/08/2018	0	0
04/15/2018	0	0
04/22/2018	0	0
04/29/2018	0	14
05/06/2018	0	0

**Item Yield**

1 Case = 50 Average Count Chicken Thighs, Fried, Breaded, Cooked, Frozen

**Thawing Instructions**

COOK FROM FROZEN

**Shelf Life**

FROZEN= 1 YR.

**Basic Preparation**

FULLY COOKED, HEAT AND SERVE, BRING TO TEMPERATURE IN OVEN OR DEEP FRYER TO A MINIMUM INTERNAL TEMPERATURE OF 165° F.

**Marketing Tips**

STRONG BRAND KNOWN FOR QUALITY WITH A BROAD LINE OF PRODUCTS.\*\*BREADED, FULLY COOKED, SUPER CHIK'N THUNDER THIGHS. FULLY COOKED, HIGHLY VERSATILE, WELL-SEASONED 5OZ AVG NATURAL THIGH WITH PRE-BROWNED BREADING THAT PROVIDES IDEAL CRISPNESS. THIS IS THE FIRST FULLY COOKED OVENABLE, BREADED FRIED CHICKEN FOR FOODSERVICE. THIS IS PIERCE CHICKEN'S PREMIUM QUALITY SELECTION. A 15% BREADING ON CONSISTENTLY SIZED PIECES. MADE FOR OVEN, MICROWAVE OR FRYER. PRODUCT HAS 3 TO 5 DAY REFRIGERATOR SHELF LIFE FOR EASE OF HEATING. SAVE LABOR, TIME, AND MINIMIZES FOOD SAFETY RISK. EXCELLENT FOR C-STORES, DELIS, OR A LA CARTE SALES.\*\*ALL RESTAURANT & DINING SEGMENTS, BANQUET & CATERERS, SCHOOLS, UNIVERSITIES, HOSPITALS/HEALTH CARE, PIZZA\*\*ENTREE, BLUE PLATE SPECIALS, BASKETS/BUCKETS/TAIL-GATING, SERVED COLD

**Nutrition**

Based On: AP Chix Thigh, FC, Brd, Pierce Rounding: On

**Ingredients**

CHICKEN THIGHS WITH BACKS, WATER, ISOLATED SOY PROTEIN WITH LESS THAN 2% LECITHIN, SALT, SODIUM PHOSPHATES, BREADED AND BATTERED WITH: ENRICHED BLEACHED WHEAT FLOUR (WHEAT FLOUR, MALTED BARLEY FLOUR, NIACIN, IRON, THIAMINE MONONITRATE, RIBOFLAVIN, FOLIC ACID), WATER, SALT, SPICES, WHEAT GLUTEN, MONOSODIUM GLUTAMATE, GARLIC POWDER, AND EXTRACTIVES OF PAPRIKA. BREADING SET IN VEGETABLE OIL. COMMON ALLERGENS: WHEAT, SOY. Prior to consuming the product, individuals with severe food allergies should confirm the ingredient information on the actual label of the product. Nutrition and Ingredient statement updated May 2018. This ingredient and nutrition information was provided by the third-party product manufacturer and/or supplier and was not in any way created or verified by GFS. The information is being passed on as a courtesy and for informational purposes only. GFS in no way guarantees the accuracy or completeness of this information and NO WARRANTIES ARE MADE OR IMPLIED; ALL IMPLIED WARRANTIES OF MERCHANTABILITY AND FITNESS FOR A PARTICULAR PURPOSE ARE EXPRESSLY EXCLUDED.

**Nutrition Facts**

Serving Size 3 oz (84g)	
Amount Per Serving	
Calories 240	Calories From Fat 162
% Daily Value *	
<b>Fat 18g</b>	28%
Saturated Fat 4g	20%
Trans Fat 0g	
PolyUnsat. Fat	n/a
MonoUnsat Fat	n/a
<b>Cholesterol 70mg</b>	23%
<b>Sodium 520mg</b>	22%
<b>Potassium</b>	n/a
<b>Carbohydrates 5g</b>	2%
Fiber 0g	n/a
Sugar 0g	
<b>Protein 14g</b>	28%
Vitamin A 0% Vitamin C 0% Calcium 0% Iron 6%	
* Based on a 2000 calorie diet	
<b>Calories Per Gram:</b>	
Fat: 9 Carbohydrates: 4 Protein: 4	

**School Equivalents:**

Child Nutrition Label	No
Serving Size	n/a
Meat/Meat Alternative	n/a
Fruit/Vegetables	n/a
Grain/Breads	n/a

**Water Soluble Vitamins:**

Thiamin	n/a
Riboflavin	n/a
Niacin B3	n/a
Pantothenic Acid	n/a
Folic Acid	n/a
Vitamin B6	n/a
Vitamin B12	n/a
Vitamin C	0 mg

**Updated For New Final Rule:**

Meat/Meat Alternative	n/a
Grain/Breads	n/a
Fruit	n/a
Red/Orange	n/a
Dark Green	n/a
Starchy	n/a
Beans/Peas	n/a
Other	n/a
Notes:	n/a

**Fat Soluble Vitamins:**

Vitamin D IU	n/a
Vitamin E mg	n/a
Vitamin K	n/a
Vitamin A IU	0 IU

## Pierce Breaded Boneless Skinless Chicken Breast Fillets, 3.5 Ounce, Cooked, Frozen, 10.5 Lb Bag, 1/Case

Item Number: 141747 \*



Lightly browned and flattened, these chicken breast fillets have four micro-thin layers of Pierce Gold batter and seasonings. They are ideal for an entree or for use in salads, wraps, and sandwiches.

- Fully cooked to save labor, time, and minimize food safety risk from handling
- Ability to prepare from frozen makes for easy preparation, and reduced cleanup and labor
- Oven bake or fry for multiple preparation options

Case (1/10.5 Pound Bag)

Print

## Nutrition

Based On:  Rounding:

### Ingredients

For ingredient or allergen information please contact: Pilgrims Pride, phone: 800-727-5366. Manufacturer number: 61110. Nutrition updated October 2015. The nutrition information provided here reflects the current information provided to GFS by its suppliers. Prior to consuming the product, individuals with severe food allergies should confirm the ingredient information on the actual label of the product.

### Nutrition Facts

Serving Size 1 each (100g)	
Amount Per Serving	
Calories 220	Calories From Fat 99
% Daily Value *	
<b>Fat</b> 11g	17%
Saturated Fat 1.5g	8%
Trans Fat 0g	
PolyUnsat. Fat	n/a
MonoUnsat Fat	n/a
<b>Cholesterol</b> 35mg	12%
<b>Sodium</b> 450mg	19%
<b>Potassium</b>	n/a
<b>Carbohydrates</b> 14g	5%
Fiber 0g	n/a
Sugar 0g	
<b>Protein</b> 16g	32%
Vitamin A 1U 0%    Vitamin C 0%    Calcium 0%    Iron 4%	
* Based on a 2000 calorie diet	
<b>Calories Per Gram:</b>	
Fat: 9    Carbohydrates: 4    Protein: 4	

**School Equivalents:**

Child Nutrition Label	No
Serving Size	n/a
Meat/Meat Alternative	n/a
Fruit/Vegetables	n/a
Grain/Breads	n/a

**Water Soluble Vitamins:**

Thiamin	n/a
Riboflavin	n/a
Niacin B3	n/a
Pantothenic Acid	n/a
Folic Acid	n/a
Vitamin B6	n/a
Vitamin B12	n/a
Vitamin C	0 mg

**Updated For New Final Rule:**

Meat/Meat Alternative	n/a
Grain/Breads	<del>██████████</del>
Fruit	n/a
Red/Orange	n/a
Dark Green	n/a
Starchy	n/a
Beans/Peas	n/a
Other	n/a
Notes:	n/a

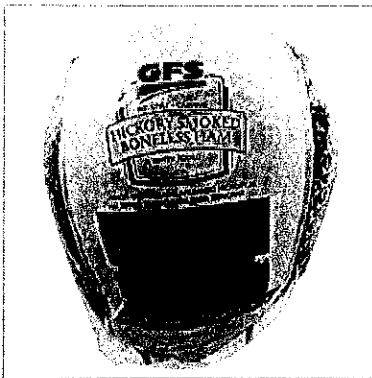
**Fat Soluble Vitamins:**

Vitamin D IU	n/a
Vitamin E mg	n/a
Vitamin K	n/a
Vitamin A IU	0 IU

**Minerals:**

Phosphorous	n/a
Zinc	n/a
Magnesium	n/a
Copper	n/a
Selenium	n/a
Calcium	0 mg
Iron	0.72 mg
Manganese	n/a
Iodine	n/a

**GFS Hickory Smoked Water-Added Pit Hams, Boneless, 15 Pound Average, Fresh, 15 Lb Avg Piece, 2/Case**



Item Number: 503751

Ideal for carving or buffet stations, this quality boneless ham is fully cooked and ready-to-serve. A naturally hickory smoked flavor, and water added formula allows for a variety of versatile preparation methods, from cold applications to hot.

- Pit-Style, pear shaped or tear drop appearance ideal for carving, traditional ham steak, and buffets
- Close-trimmed, provides a very lean whole-muscle ham with great flavor and pleasing appearance
- Made from a no dextrose formula to prevent charring in the oven

Case (2/15 Pound average Piece)



Print

**Nutrition**

Based On:

Rounding:

**Ingredients**

Ham cured with water, salt, dextrose, sodium phosphates, sodium erythorbate, sodium nitrite. COMMON ALLERGENS PRESENT: None. Nutrition and Ingredient statement updated August 2015. The ingredient and nutrition information provided here reflects the current information provided to GFS by its suppliers. Prior to consuming the product, individuals with severe food allergies should confirm the ingredient information on the actual label of the product.

**Nutrition Facts**

Serving Size 3 oz (84g)	
Amount Per Serving	
<b>Calories 120</b>	Calories From Fat 63
	% Daily Value *
<b>Fat 7g</b>	11%
Saturated Fat 2.5g	13%
Trans Fat 0g	
PolyUnsat. Fat	n/a
MonoUnsat Fat	n/a
<b>Cholesterol 45mg</b>	15%
<b>Sodium 960mg</b>	40%
<b>Potassium</b>	n/a
<b>Carbohydrates 1g</b>	n/a
Fiber 0g	n/a
Sugar 1g	
<b>Protein 13g</b>	26%
Vitamin A 0%    Vitamin C 0%    Calcium 0%    Iron 4%	
* Based on a 2000 calorie diet	
<b>Calories Per Gram:</b>	
Fat: 9    Carbohydrates: 4    Protein: 4	

**School Equivalents:**

Child Nutrition Label	No
Serving Size	n/a
Meat/Meat Alternative	n/a
Fruit/Vegetables	n/a
Grain/Breads	n/a

**Water Soluble Vitamins:**

Thiamin	n/a
Riboflavin	n/a
Niacin B3	n/a
Pantothenic Acid	n/a
Folic Acid	n/a
Vitamin B6	n/a
Vitamin B12	n/a
Vitamin C	0 mg

**Updated For New Final Rule:**

Meat/Meat Alternative	n/a
Grain/Breads	n/a
Fruit	n/a
Red/Orange	n/a
Dark Green	n/a
Starchy	n/a
Beans/Peas	n/a
Other	n/a
Notes:	n/a

**Fat Soluble Vitamins:**

Vitamin D IU	n/a
Vitamin E mg	n/a
Vitamin K	n/a
Vitamin A IU	0 IU

**Minerals:**

Phosphorous	n/a
Zinc	n/a
Magnesium	n/a
Copper	n/a
Selenium	n/a
Calcium	0 mg
Iron	0.72 mg
Manganese	n/a
Iodine	n/a



**GFS Smoked Beef & Pork Sausage,  
6-3/4 Inch, Links, 4 Count Per Pound,  
Cooked, Frozen, 5 Lb Bag, 2/Case**



Item Number: 307661

Made from quality pork and beef, these smoked sausage links feature an old-world flavor, ideal for a variety of applications. These skinless, polish sausages feature a hint of garlic and have a coarse-ground texture, which has been hardwood smoked to create an intense flavor.

- Contains zero grams trans fat
- No added soy or vegetable protein ensures 100 percent natural product

Case (2/5 Pound Bag)

\$0.59/Each \$23.45

Print

**More**

**Manufacturer**

**Quantity Invoiced, Last 7-Weeks:**

Pack	2/Case	Week of	Bag	Case
Portion Size	Each	03/25/2018	0	0
Portion/Case	40	04/01/2018	0	0
Kosher	No	04/08/2018	0	0
Gluten-free	Yes	04/15/2018	0	0
Net Weight	10lbs	04/22/2018	0	16
Vendor Item Code	307661	04/29/2018	0	0
Country of Origin	United States	05/06/2018	0	1

**Item Yield**

1 Case = 40 (2 x 20 per Bag) Sausage, Smoked Beef & Pork, 6-3/4 Inch, Links, 4 Count Per Pound, Cooked, Frozen

**Thawing Instructions**

FROZEN PRODUCT, THAW UNDER REFRIGERATION AT 40 DEGREE F OF LESS.

**Shelf Life**

FROZEN = 210 DAYS FROM DATE OF PRODUCTION

**Basic Preparation**

FULLY COOKED, CAN BE STEAMED, GRILLED, MICROWAVED, OR OVEN HEATED, HEAT TO 165 DEG F. INTERNAL FOR MINIMUM OF 15 SECONDS, HOLD ABOVE 140 DEG F. CONSULT LOCAL PUBLIC CODES FOR LOCAL REQUIREMENTS

**Marketing Tips**

RICH SMOKED FLAVOR, SKINLESS SMOKED SAUSAGE, FULLY COOKED, NET WEIGHT LINKS, CAN BE SERVED ON A BUN, OR CUT INTO A DISH. GREAT FOR HEALTH CARE, WHERE NO CASING IS DESIRED, GAS FLUSH PACKAGING\*\*SKINLESS NET WEIGHT LINKS, 4/1 6 3/4" LINKS, MADE ONLY FROM FRESH BEEF & PORK, NO TOUGH CASING, GAS FLUSH PACKAGING, NO VISIBLE CUTS FROM CASING REMOVAL PROCESS, NO VISIBLE CUTS FROM CASING REMOVAL PROCESS\*\*QSRS, HEALTH CARE, EDUCATION, CATERERS\*\*CAN BE USED ON BUNS, OR CUT INTO FINISHED DISH OR BUFFET. CAN BE USED IN DESIGN A DOG MENU IDEAS. CAN BE SERVED W/BAKED BEANS OR SLICED W/BBQ SAUCE AS AN APPETIZER ITEM.

**Nutrition**

Based On: AP Sausage, Smkd, 4/#, GFS Rounding: On

**Ingredients**

Pork and beef, water, less than 2% of the following: salt, flavoring, sorbitol, potassium lactate, corn syrup solids, sodium diacetate, monosodium glutamate, sodium erythorbate, oleoresin of paprika, sugar, sodium phosphate, dextrose, sodium nitrite, lemon powder. COMMON ALLERGENS PRESENT: None. Prior to consuming the product, individuals with severe food allergies should confirm the ingredient information on the actual label of the product. Nutrition and Ingredient statement updated May 2017. This ingredient and nutrition information was provided by the third-party product manufacturer and/or supplier and was not in any way created or verified by GFS. The information is being passed on as a courtesy and for informational purposes only. GFS in no way guarantees the accuracy or completeness of this information and NO WARRANTIES ARE MADE OR IMPLIED; ALL IMPLIED WARRANTIES OF MERCHANTABILITY AND FITNESS FOR A PARTICULAR PURPOSE ARE EXPRESSLY EXCLUDED.

**Nutrition Facts**

Serving Size 1 each (113g)	
Amount Per Serving	
Calories 330	Calories From Fat 261
% Daily Value *	
<b>Fat 29g</b>	45%
Saturated Fat 11g	55%
Trans Fat 1g	
PolyUnsat. Fat	n/a
MonoUnsat Fat	n/a
<b>Cholesterol 75mg</b>	25%
<b>Sodium 1060mg</b>	44%
<b>Potassium 620mg</b>	18%
<b>Carbohydrates 2g</b>	1%
Fiber 0g	n/a
Sugar 1g	
<b>Protein 15g</b>	30%
Vitamin A 1U 1%    Vitamin C 0%    Calcium 0%    Iron 6%	
* Based on a 2000 calorie diet	
<b>Calories Per Gram:</b>	
Fat: 9    Carbohydrates: 4    Protein: 4	

**School Equivalents:**

Child Nutrition Label	No
Serving Size	n/a
Meat/Meat Alternative	n/a
Fruit/Vegetables	n/a
Grain/Breads	n/a

**Water Soluble Vitamins:**

Thiamin	n/a
Riboflavin	n/a
Niacin B3	n/a
Pantothenic Acid	n/a
Folic Acid	n/a
Vitamin B6	n/a
Vitamin B12	n/a
Vitamin C	0.01 mg



**Updated For New Final Rule:**

Meat/Meat Alternative	n/a
Grain/Breads	n/a
Fruit	n/a
Red/Orange	n/a
Dark Green	n/a
Starchy	n/a
Beans/Peas	n/a
Other	n/a
Notes:	n/a

**Fat Soluble Vitamins:**

Vitamin D IU	n/a
Vitamin E mg	n/a
Vitamin K	n/a
Vitamin A IU	35.24 IU

**Perdue Hardwood-Smoked Polish Turkey Sausage, Links, 5 Count Per Pound, Cooked, Frozen, 12 Lb Case, 1/Case**

Item Number: 217239  

Made with fully-cooked turkey meat, this sausage feature a signature blend of spices and seasonings, offering an alternative to traditional pork sausages.



Case (1/12 Pound Case)

\$0.50/Each \$30.10

Print

**More**

**Manufacturer**

**Quantity Invoiced, Last 7-Weeks:**

Pack	1/Case	Week of	Case	Case
Portion Size	Each	03/25/2018	0	0
Portion/Case	60	04/01/2018	0	0
Kosher	No	04/08/2018	0	0
Gluten-free	No	04/15/2018	0	0
Net Weight	12lbs	04/22/2018	0	2
Vendor Item Code	50107	04/29/2018	0	0
Country of Origin	United States	05/06/2018	0	0
UPC Code 1	10072745501071			
UPC Code 2	10071755011877			
UPC Code 3	72745501074			

**Item Yield**

1 Case = 60 Sausage, Polish Turkey, Hardwood-Smoked, Links, 5 Count Per Pound, Cooked, Frozen

**Thawing Instructions**

THAW IN REFRIGERATED UNIT OR PREPARE FROZEN.

**Shelf Life**

FROZEN= 12 MONTHS.

**Basic Preparation**

POLISH SAUSAGE IS FULLY COOKED. CAN BE WARMED IN OVEN, GRILL, OR O A HOT DOG ROLLER.

**Marketing Tips**

GREAT VALUE, MUCH BETTER VALUE THAN COMPARABLE PORK PRODUCTS. \*\*3 OZ. FULLY COOKED POLISH SAUSAGE MADE FROM TURKEY. CONVENIENT AND TASTY PRODUCT. MADE FROM 100% TURKEY. \*\*SANDWICHES, CAMPS, LUNCH ITEM, ALSO GREAT FOR KIDS MEALS, SCHOOLS AND INSTITUTIONAL FEEDING.\*\*SERVE ON A BUN OR WITH SAUERKRAUT AS AN ENTRE.

**Nutrition**

Based On: AP Sausage, Turkey, Polish,Cooked, 3.2z, Rounding: On

**Ingredients**

Mechanically separated Turkey, water, salt, corn syrup, flavorings, dextrose, sodium phosphates, sodium erthorbate, sodium nitrite. COMMON ALLERGENS PRESENT: None. Prior to consuming the

**Nutrition Facts**

Serving Size 1 each (91g)  
Amount Per Serving

product, individuals with severe food allergies should confirm the ingredient information on the actual label of the product. Nutrition and ingredient statement updated April 2018. This ingredient and nutrition information was provided by the third-party product manufacturer and/or supplier and was not in any way created or verified by GFS. The information is being passed on as a courtesy and for informational purposes only. GFS in no way guarantees the accuracy or completeness of this information and NO WARRANTIES ARE MADE OR IMPLIED; ALL IMPLIED WARRANTIES OF MERCHANTABILITY AND FITNESS FOR A PARTICULAR PURPOSE ARE EXPRESSLY EXCLUDED.

Calories 150	Calories From Fat 90
% Daily Value *	
<b>Fat 10g</b>	15%
Saturated Fat 3g	15%
Trans Fat 0g	
PolyUnsat. Fat	n/a
MonoUnsat Fat	n/a
<b>Cholesterol 65mg</b>	22%
<b>Sodium 1030mg</b>	43%
<b>Potassium</b>	n/a
<b>Carbohydrates 3g</b>	1%
Fiber 0g	n/a
Sugar 2g	
<b>Protein 11g</b>	22%
Vitamin C n/a	Calcium 8% Iron 8%
* Based on a 2000 calorie diet	
<b>Calories Per Gram:</b>	
Fat: 9 Carbohydrates: 4 Protein: 4	

**School Equivalents:**

Child Nutrition Label	No
Serving Size	n/a
Meat/Meat Alternative	n/a
Fruit/Vegetables	n/a
Grain/Breads	n/a

**Water Soluble Vitamins:**

Thiamin	n/a
Riboflavin	n/a
Niacin B3	n/a
Pantothenic Acid	n/a
Folic Acid	n/a
Vitamin B6	n/a
Vitamin B12	n/a
Vitamin C	

**Updated For New Final Rule:**

Meat/Meat Alternative	n/a
Grain/Breads	n/a
Fruit	n/a
Red/Orange	n/a
Dark Green	n/a
Starchy	n/a
Beans/Peas	n/a
Other	n/a
Notes:	n/a

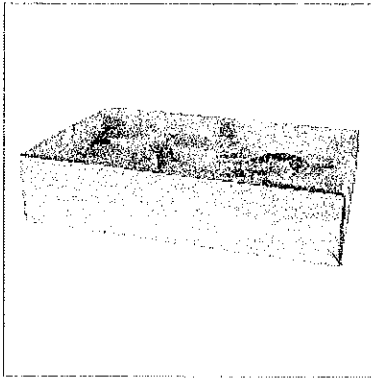
**Fat Soluble Vitamins:**

Vitamin D IU	n/a
Vitamin E mg	n/a
Vitamin K	n/a
Vitamin A IU	

**Minerals:**

Phosphorous	n/a
Zinc	n/a
Magnesium	n/a
Copper	n/a
Selenium	n/a
Calcium	80 mg
Iron	1.44 mg
Manganese	n/a
Iodine	n/a

**Davis Creek Meats Marinated Pork Loin Chops, Boneless, Center-Cut, 4 Ounce, IQF, 4 Oz Each, 40/Case**



Item Number: 134740

This masterfully cut, richly marbled pork loin is the ideal choice for grilling, stuffing, or roasting with your favorite combination of herbs and spices.

- Center-cut from the midsection of the pork loin for consistent presentation
- Marinated for added flavor and juiciness
- Individually quick frozen ensures freshness and allows for easy product separation while frozen

Case (40/4 Ounce Each)

\$0.97/ea

\$38.83



Print

**Nutrition**

Based On:

Rounding:

**Ingredients**

Pork, water, salt, sodium tripolyphosphate (30.06%), lemon juice concentrate. COMMON ALLERGENS PRESENT: None. Nutrition and ingredient statement updated August 2015. The ingredient and nutrition information provided here reflects the current information provided to GFS by its suppliers. Prior to consuming the product, individuals with severe food allergies should confirm the ingredient information on the actual label of the product.

**Nutrition Facts**

Serving Size 4 oz (113g)	
Amount Per Serving	
<b>Calories 200</b>	Calories From Fat 90
	% Daily Value *
<b>Fat 10g</b>	15%
Saturated Fat 3.5g	17%
Trans Fat 0g	
PolyUnsat. Fat	n/a
MonoUnsat Fat	n/a
<b>Cholesterol 80mg</b>	27%
<b>Sodium 670mg</b>	28%
<b>Potassium</b>	n/a
<b>Carbohydrates 0g</b>	n/a
Fiber 0g	n/a
Sugar 0g	
<b>Protein 24g</b>	48%
Vitamin A IU 0%    Vitamin C 2%    Calcium 2%    Iron 4%	
* Based on a 2000 calorie diet	
<b>Calories Per Gram:</b>	
Fat: 9    Carbohydrates: 4    Protein: 4	

**School Equivalents:**

Child Nutrition Label	No
Serving Size	n/a
Meat/Meat Alternative	n/a
Fruit/Vegetables	n/a
Grain/Breads	n/a

**Water Soluble Vitamins:**

Thiamin	n/a
Riboflavin	n/a
Niacin B3	n/a
Pantothenic Acid	n/a
Folic Acid	n/a
Vitamin B6	n/a
Vitamin B12	n/a
Vitamin C	1.2 mg

**Updated For New Final Rule:**

Meat/Meat Alternative	n/a
Grain/Breads	n/a
Fruit	n/a
Red/Orange	n/a
Dark Green	n/a
Starchy	n/a
Beans/Peas	n/a
Other	n/a
Notes:	n/a

**Fat Soluble Vitamins:**

Vitamin D IU	n/a
Vitamin E mg	n/a
Vitamin K	n/a
Vitamin A IU	0 IU

**Minerals:**

Phosphorous	n/a
Zinc	n/a
Magnesium	n/a
Copper	n/a
Selenium	n/a
Calcium	20 mg
Iron	0.72 mg
Manganese	n/a
Iodine	n/a

**Davis Creek Meats Marinated Pork Loin, Rolled & Tied, 12-1/2 Pound Average, Frozen, 12.5 Lb Avg Piece, 2/Case**



Item Number: 441202

These whole, boneless pork loins have been deboned, cut in half, and marinated before being netted.

- Marinated for added flavor and juiciness
- Chline-off is the removal of the backbone leaving the rib bones and the primary muscle intact

Case (2/12.5 Pound average Piece)

\$0.15/oz \$2.35/lb

Print

**More**

**Manufacturer**

Pack	2/Case
Portion Size	oz
Portion/Case	400
Kosher	No
Gluten-free	Yes
Net Weight	25lbs
Vendor Item Code	441202-2534

**Quantity Invoiced, Last 7-Weeks:**

Week of	Piece	Case
03/25/2018	0	0
04/01/2018	0	0
04/08/2018	0	6
04/15/2018	0	0
04/22/2018	0	0
04/29/2018	0	0
05/06/2018	0	0

**Item Yield**

1 Case = 400 Ounce Average (2 x 200 Ounce Average per Piece) of Pork Loin, Marinated, Rolled & Tied, 12-1/2 Pound Average, Frozen

**Thawing Instructions**

THAW UNDER REFRIGERATION.

**Shelf Life**

FROZEN = 365 DAYS @ 0°F (OR LESS) FROM DATE OF PRODUCTION.

**Basic Preparation**

TERRIFIC WHEN SLOW ROASTED IN THE OVEN UNTIL INTERNAL TEMPERATURE REACHES 160 DEGREES.

**Marketing Tips**

DCM BRT PORK LOIN ROASTS ARE AN AMAZING VALUE, OPERATORS WILL BE ABLE TO FEED MANY PEOPLE A FLAVORFUL, SATISFYING MEAL FOR VERY LITTLE COST.\*\*DCM BRT PORK LOIN ROASTS ARE WHOLE BONELESS PORK LOINS WHICH HAVE BEEN DE-BONED, THEN CUT IN HALF AND NETTED. EXCELLENT FOR ANYONE LOOKING TO SERVE SEVERAL PEOPLE AN IMPRESSIVE MEAL FOR VERY LITTLE COST. THIS ITEM IS PERFECT FOR RESTAURANTS, HEALTHCARE, AND MASS FEEDERS. EXCELLENT FOR A CARVING STATION. DCM BRT PORK LOIN ROASTS HAVE BEEN MARINATED FOR INCREASED TENDERNESS, MEANING THIS ITEM WILL NOT DRY OUT LIKE COMPETITIVE PRODUCT.\*\*RESTAURANTS, HEALTHCARE, MASS FEEDERS, AND BUFFET CARVING STATIONS.\*\*ROASTED PORK LOIN.

**Nutrition**

Based On: AP Pork Loin, Raw, Mrmt, DCM

Rounding: On

**Ingredients**

**Nutrition Facts**

Pork, water, salt, sodium tripolyphosphate (30.06%), lemon juice concentrates. COMMON ALLERGENS PRESENT: None. Prior to consuming the product, individuals with severe food allergies should confirm the ingredient information on the actual label of the product. Nutrition and ingredient statement updated May 2017. This ingredient and nutrition information was provided by the third-party product manufacturer and/or supplier and was not in any way created or verified by GFS. The information is being passed on as a courtesy and for informational purposes only. GFS in no way guarantees the accuracy or completeness of this information and NO WARRANTIES ARE MADE OR IMPLIED; ALL IMPLIED WARRANTIES OF MERCHANTABILITY AND FITNESS FOR A PARTICULAR PURPOSE ARE EXPRESSLY EXCLUDED.

Serving Size 4 oz (113.4g)	
Amount Per Serving	
<b>Calories 200</b>	Calories From Fat 99
	% Daily Value *
<b>Fat 11g</b>	17%
Saturated Fat 3.5g	18%
Trans Fat 0g	
PolyUnsat. Fat	n/a
MonoUnsat Fat	n/a
<b>Cholesterol 80mg</b>	27%
<b>Sodium 500mg</b>	21%
<b>Potassium</b>	n/a
<b>Carbohydrates 0g</b>	n/a
Fiber 0g	n/a
Sugar 0g	
<b>Protein 25g</b>	50%
Vitamin A IU 0%	Vitamin C 0%
Calcium 2%	Iron 4%
* Based on a 2000 calorie diet	
<b>Calories Per Gram:</b>	
Fat: 9	Carbohydrates: 4 Protein: 4

**School Equivalents:**

Child Nutrition Label	No
Serving Size	n/a
Meat/Meat Alternative	n/a
Fruit/Vegetables	n/a
Grain/Breads	n/a

**Water Soluble Vitamins:**

Thiamin	n/a
Riboflavin	n/a
Niacin B3	n/a
Pantothenic Acid	n/a
Folic Acid	n/a
Vitamin B6	n/a
Vitamin B12	n/a
Vitamin C	0 mg

**Updated For New Final Rule:**

Meat/Meat Alternative	n/a
Grain/Breads	n/a
Fruit	n/a
Red/Orange	n/a
Dark Green	n/a
Starchy	n/a
Beans/Peas	n/a
Other	n/a
Notes:	n/a


**Fat Soluble Vitamins:**

Vitamin D IU	n/a
Vitamin E mg	n/a
Vitamin K	n/a
Vitamin A IU	0 IU



**Brickman's Hickory-Smoked Pan-Roasted Boneless Skinless Turkey Breasts, Cooked, Refrigerated, 8.5 Lb Avg Piece, 2/Case**



Item Number: 848808 

These premium quality, all-natural turkey breasts have been pan-roasted and hickory smoked for an increased flavor profile. Made from two whole muscle breasts, these skinless breasts maintain the natural appearance of turkey without any added starches or fillers. Ideal for slicing, it can be served in hot or cold applications.

Case (2/8.5 Pound average Piece)

Print

**Nutrition**

Based On:  Rounding:

**Ingredients**

Turkey Breast, Water and 2% or Less of the Following: Salt, Brown Sugar, Sodium Phosphate, Sodium Erythorbate, Sodium Nitrite. COMMON ALLERGENS PRESENT: None. Prior to consuming the product, individuals with severe food allergies should confirm the ingredient information on the actual label of the product. Nutrition and ingredient statement updated February 2016. This ingredient and nutrition information was provided by the third-party product manufacturer and/or supplier and was not in any way created or verified by GFS. The information is being passed on as a courtesy and for informational purposes only. GFS in no way guarantees the accuracy or completeness of this information and NO WARRANTIES ARE MADE OR IMPLIED; ALL IMPLIED WARRANTIES OF MERCHANTABILITY AND FITNESS FOR A PARTICULAR PURPOSE ARE EXPRESSLY EXCLUDED.

**Nutrition Facts**

Serving Size 2 oz (56g)	
Amount Per Serving	
Calories 50	Calories From Fat 4.5
% Daily Value *	
Fat 0.5g	1%
Saturated Fat 0g	n/a
Trans Fat 0g	
PolyUnsat. Fat	n/a
MonoUnsat Fat	n/a
Cholesterol 30mg	10%
Sodium 410mg	17%
Potassium	n/a
Carbohydrates 1g	n/a
Fiber 0g	n/a
Sugar 1g	
Protein 11g	22%
Vitamin A 1U 0% Vitamin C 0% Calcium 0% Iron 2%	
* Based on a 2000 calorie diet	
Calories Per Gram:	
Fat 9 Carbohydrates: 4 Protein: 4	

**School Equivalents:**

Child Nutrition Label	No
Serving Size	4 Oz Serving
Meat/Meat Alternative	n/a
Fruit/Vegetables	n/a
Grain/Breads	n/a

**Water Soluble Vitamins:**

Thiamin	n/a
Riboflavin	n/a
Niacin B3	n/a
Pantothenic Acid	n/a
Folic Acid	n/a
Vitamin B6	n/a
Vitamin B12	n/a
Vitamin C	0 mg

**Updated For New Final Rule:**

Meat/Meat Alternative	2 oz
Grain/Breads	0 oz eq
Fruit	0 cup
Red/Orange	<del>0 cup</del>
Dark Green	0 cup
Starchy	0 cup
Beans/Peas	0 cup
Other	0 cup
Notes:	No PFS on file

**Fat Soluble Vitamins:**

Vitamin D IU	n/a
Vitamin E mg	n/a
Vitamin K	n/a
Vitamin A IU	0 IU

**Minerals:**

Phosphorous	n/a
Zinc	n/a
Magnesium	n/a
Copper	n/a
Selenium	n/a
Calcium	0 mg
Iron	0.36 mg
Manganese	n/a
Iodine	n/a